

ON A SPECIMEN OF *SELAROIDES LEPTOLEPIS* (CUVIER AND VALENCIENNES) WITHOUT THE USUAL DETACHED ANAL SPINES

One of the characteristic features in Carangids is the presence of two spines detached from the rest of the anal fin. In the course of an investigation on the biology of *Selaroides leptolepis*, a common Carangid of this area, a specimen was collected on 11-2-1959 from Pudumadam, without the two detached spines. Except for this it resembled the normal specimens. The abnormal specimen, a female, measured 13.6 cm. in total length and weighed 28g. and had ovaries in the IV stage of maturity.

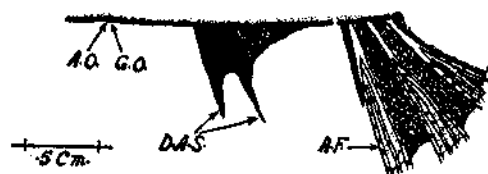


FIG. 1. Anterior portion of the anal fin in a normal specimen. D.A.S.—Detached anal spines; A.O.—Anal opening; A.F.—Anal fin; G.O.—Genital opening.

Spines appear in the juvenile stage and the youngest specimen in the collection measuring 24.5 mm. had well-differentiated spines. Accompanying sketches

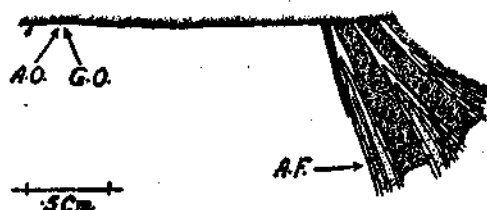


FIG. 2. Anterior portion of the anal fin in the abnormal specimen. A.O.—Anal opening; G.O.—Genital opening; A.F.—Anal fin.

show the anterior portion of the anal fin with the anal spines in a normal specimen (Fig. 1) and without the anal spines in the abnormal one (Fig. 2).

Central Marine Fisheries
Research Station
Marine Fisheries P.O.
Mandapam Camp.

K. K. TANDON

Published with the permission of the Chief Research Officer, Central Marine Fisheries Research Station, Mandapam Camp.